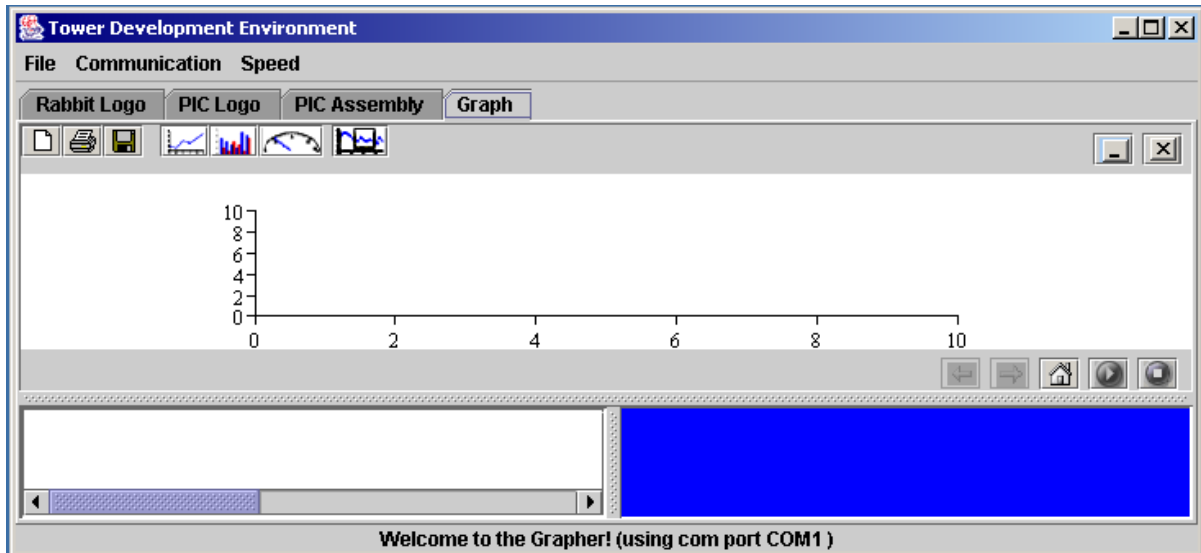


## Graph Comments

For all procedures, the order of the parameters indicates the order in which the parameters should be passed to the procedure.



- **add-dataset**

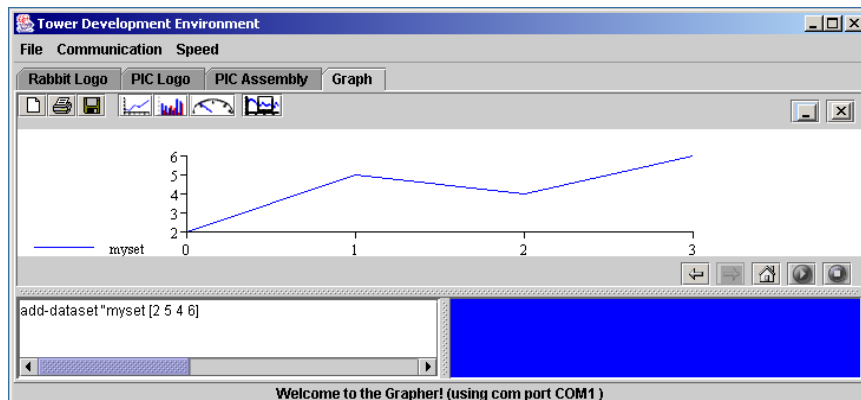
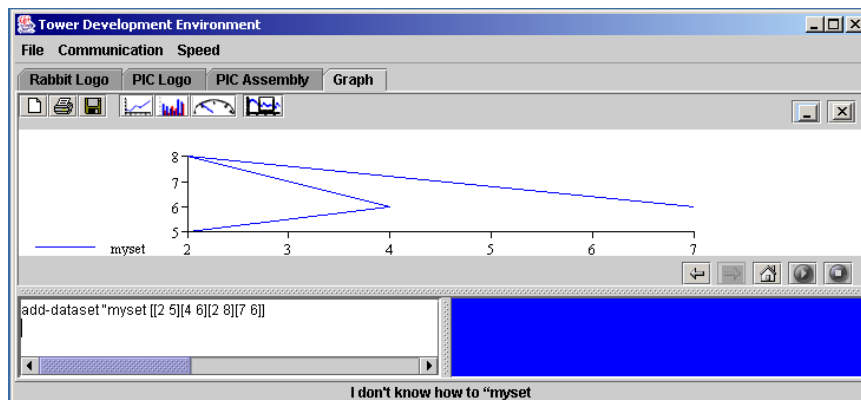
Adds a set of y-values to the chart

- parameters:

- title of the dataset
- an array of x-y values or just the y values (the default x values are consecutive integers starting from 0)

Usage: `add-dataset "myset [[2 5][4 6][2 8][7 6]]`

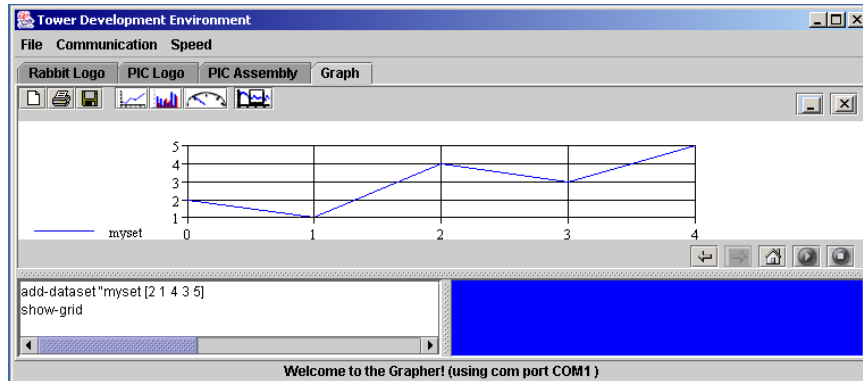
Usage: `add-dataset "myset [2 5 4 6]`



- **remove-dataset**  
Removes a dataset from the chart
  - parameters
    - the title of the dataset being removed
 Usage: `remove-dataset "myset"`
  
- **name-datasets**  
Enumerates all datasets of this chart
  - no parameters
  
- **clear-chart**  
Clears the chart
  - no parameters
  
- **add-data-point**  
Adds a new coordinate to a dataset in the chart
  - parameters
    - the name of the dataset
    - the coordinate (first x-value, then y-value)
 Usage: `add-data-point "myset" [4 20]`
  
- **remove-data-point**  
Removes a point from a dataset in the chart
  - parameters
    - the name of the dataset
    - the coordinate (first x-value, then y-value)
 Usage: `remove-data-point "myset" [4 20]`
  
- **name-chart**  
Gives the entire chart a name, which shows up above the chart
  - parameters
    - the name you want to give the chart
 Usage: `name-chart "hello"`
  
- **unname-chart**  
Gets rid of the chart's name. If the chart didn't have a name to begin with, does nothing
  - no parameters
  
- **label-axis**  
Labels the x and y axis
  - parameters
    - name for x axis
    - name for y axis

Usage: label-axis "hi" "bye"

- **show-grid**  
Makes the background of the chart a grid  
- no parameters



- **hide-grid**  
Takes away the grid in the chart's background  
- no parameters
- **captured-data**  
Returns the data that was captured from PIC Logo as a list. Returns an empty list if no data was stored  
-no parameters